

LAN



Solutions for **Enterprise** and **Public Access**

In today's fast-paced world, mobile professionals' expectations are growing. They require instant and transparent access to information, wherever they are. And they expect to continue working, uninterrupted, as they move from place to place. To address these growing needs, Proxim offers complete solutions for enterprises and public access—enabling easy corporate visitor access and instant creation of hot spots in small, medium and large venues.



proxim
WIRELESS NETWORKS
Take your network further

Solutions for Enterprise



Making faster and better business decisions requires access to vital data in all types of situations. That's why Proxim's enterprise solutions provide mobile Internet access for corporate employees as well as corporate visitors.

Using Proxim's ORiNOCO® AP-2000 together with AP-2500 access points, enterprises can now offer Internet access to employees, customers, suppliers and business partners—without sacrificing the integrity of the corporate network. AP-2000 access points create a secure wireless LAN that supports both 802.11a and 802.11b standards, while the AP-2500 provides additional functionality in public areas such as lobbies, cafeterias and conference rooms.

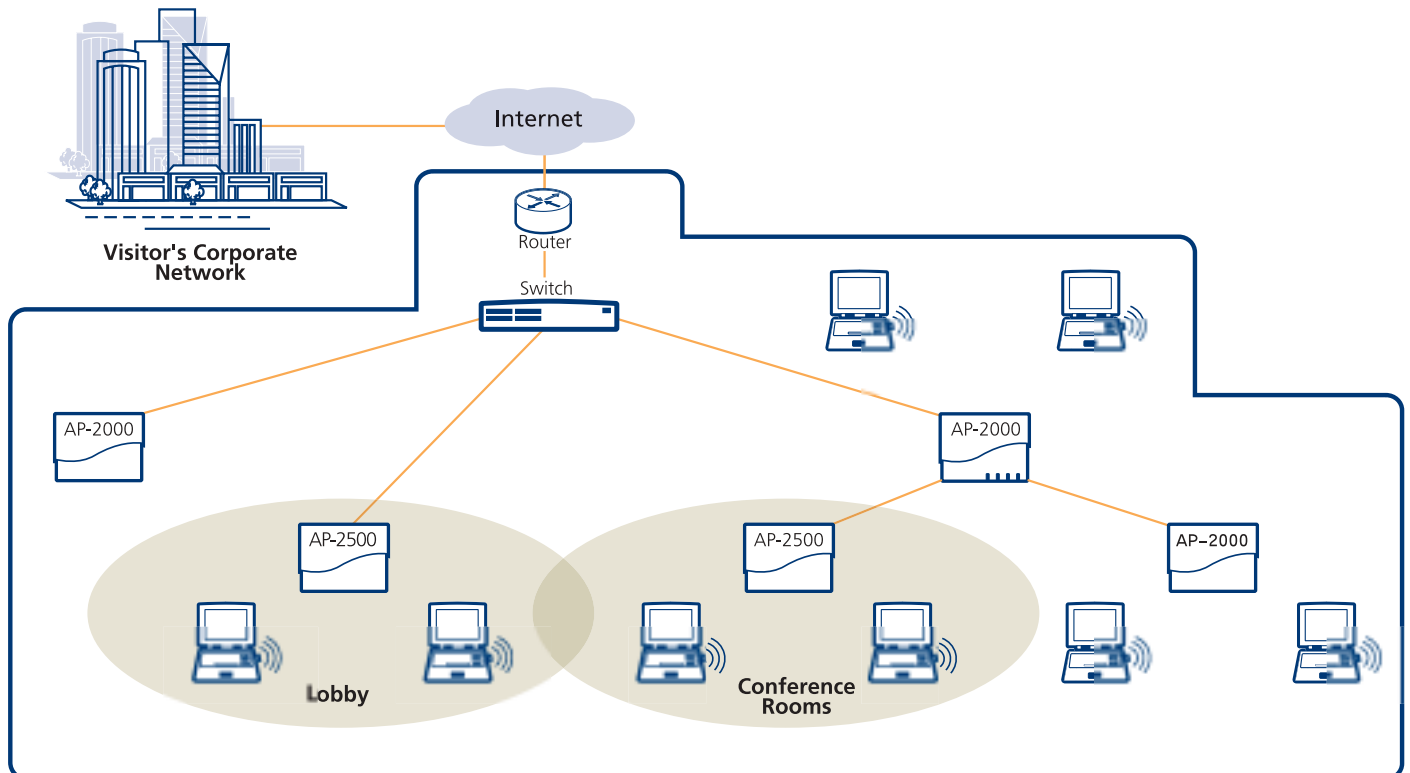
Internet access for enterprise visitors

With the AP-2500, corporate visitors don't have to worry about changing their computer settings to access the Internet. The Dynamic Address Translation feature automatically maps the visitor's addresses to an appropriate TCP/IP configuration—minimizing the need for IT support.

With just one click on their web browsers, visitors can get Internet access or set up a secure VPN connection to their own corporate networks. VLAN functionality ensures your corporate network stays

private and secure, by enabling visitors to access the Internet through a separate virtual wireless LAN.

Seamless Internet and network access means that visitors can now enhance their presentations with remote live demos, video conferencing or other tools that can make meetings more productive. Integrating the AP-2500 into an enterprise network of AP-2000 access points provides all business partners with access to the information they need to make more effective decisions.



Enterprise Network

Solutions for Public Access

Proxim's solutions for public access enable venue owners and service providers to cost-effectively offer wireless Internet access in hot spots of all sizes. Hot spot providers can choose between Proxim's ORINOCO AP-2500 and ORINOCO AP-2000 access points, which provide optimal hot spot functionality according to size of venue. Both solutions offer capabilities essential to the successful operation of hot spots, including:

- Instant customer acquisition
- Ideal area coverage and bandwidth allocation
- Superior customer ease of use
- Maximum network security
- New revenue opportunities through advertising, e-commerce and service differentiation



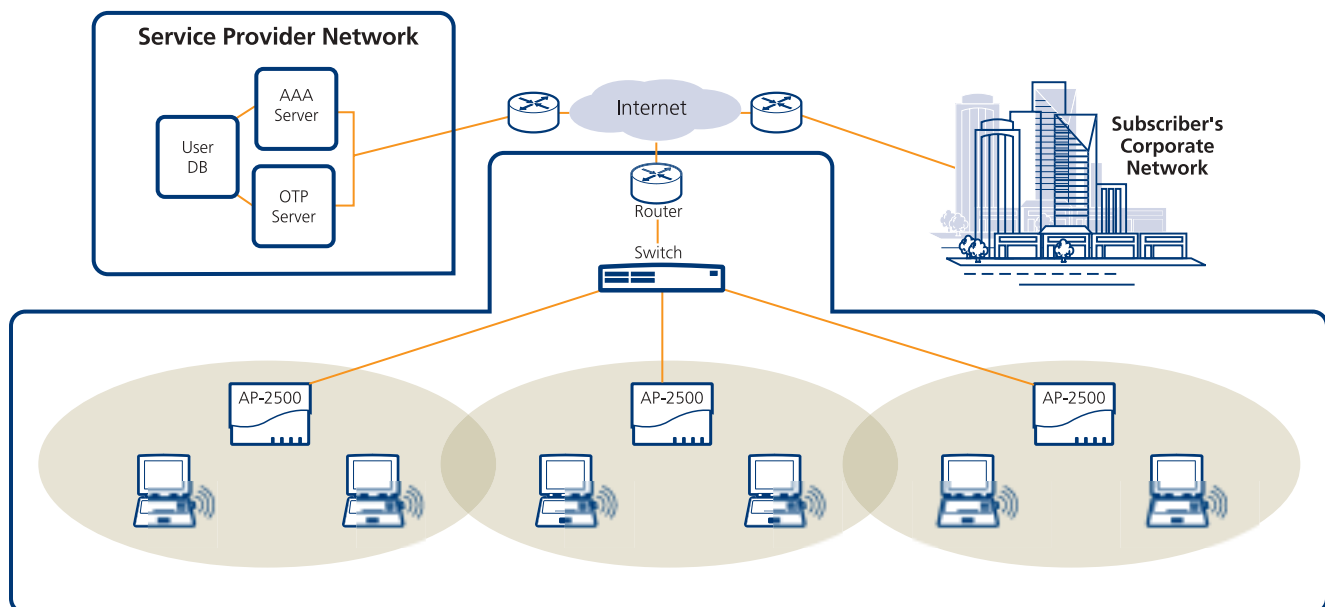
All-in-one gateway and access point for small & medium hot spots

The ORINOCO AP-2500 specifically addresses the needs of small and medium size venues, such as regional airports, hotels and coffee shops. With typically less than 100 concurrent users and limited coverage areas, small and medium venues can greatly benefit from this all-in-one access point and gateway.

The AP-2500 eliminates the need for expensive back-end gateways while offering advanced gateway features that simplify the user experience, enable instant customer acquisition and reduce operational costs. Home page redirection and Dynamic Address Translation, for instance, provide seamless Internet access regardless of the user's network settings. Features such as this ensure ease-of-use for the customer, minimizing customer support calls and hot spot IT costs.

Support for industry-standard billing and authentication not only ensures smooth integration with most hot spot providers' existing billing processes, but also enables service differentiation. Hot spot operators can use billing methods, like pay-per-use and prepaid, for on-the-spot customer acquisition. Various authentication methods allow customers to seamlessly roam between their corporate enterprise and multiple hot spots, while advanced security ensures the customer's privacy.

Supporting both Wi-Fi 802.11b and IEEE 802.11a standards and up to 500 concurrent users, the AP-2500 provides an ideal hot-spot-in-a-box solution for small and medium size venues.



Small/Medium Hot Spot

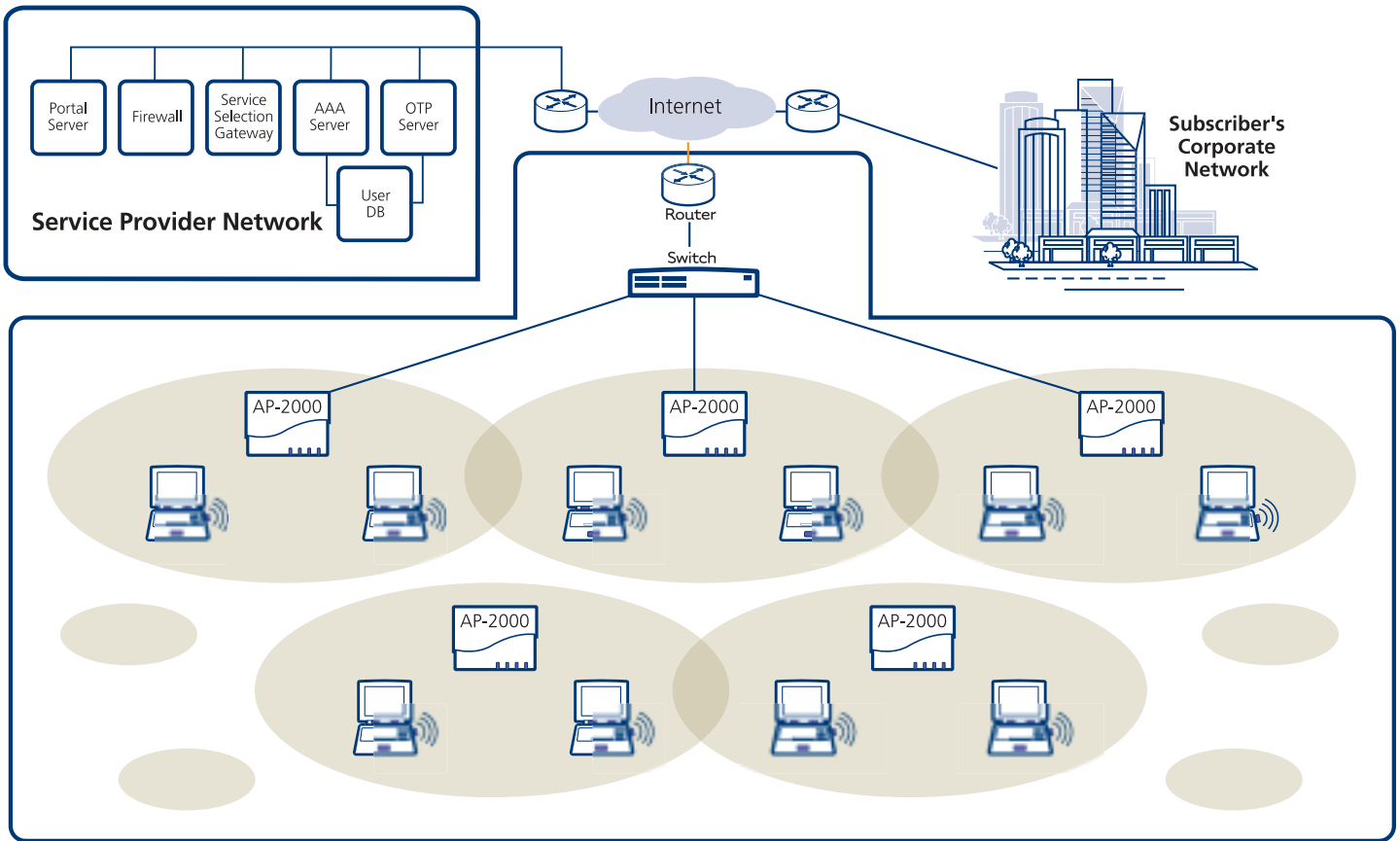
Enterprise-class access points for large venues

For large venues, such as large international airports and convention centers, the ORINOCO AP-2000 provides an ideal solution. These enterprise-class access points work in conjunction with a standalone access gateway to support hundreds of concurrent users and sizeable coverage areas, typical of large venues.

With the AP-2000, venue owners and service providers can roll out a complete wireless LAN infrastructure that can be easily managed from a central location. And the cost of the back-end gateway can be amortized over multiple access points, usually required by a large venue. These attributes make the AP-2000 wireless LAN an easy-to-deploy, cost-effective hot spot solution.

Supporting both Wi-Fi 802.11b and 802.11a stations, the AP-2000 provides best-in-class wireless connectivity, privacy and security that ensure a seamless user experience for subscribers and a smooth-running operation for hot spot providers. Key features include VLAN support, advanced security with 802.1x support, and remote management.

The AP-2000 also provides easy integration with standard billing and authentication processes that are used by most service providers. Support for intracell traffic blocking, packet forwarding, IP port filtering and RADIUS accounting make this a perfect fit for large public access deployments.



Large Hot Spot

Ordering Information:

AP-2000

Dual-Slot Enterprise Access Point

AP-2500

Dual-Slot Visitor and Public Access Point



Proxim Corporation
935 Stewart Drive
Sunnyvale, California 94085

tel: 800.229.1630
tel: 408.731.2700
fax: 408.731.3675